

# LYNX

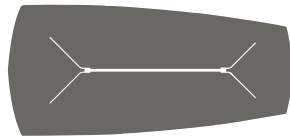
---

Factsheet 2020

Zoom  
byMobimex



**Rechtecktisch**  
Rectangular table



**Flow-Tisch**  
Flow table



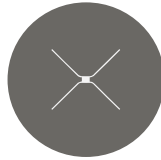
**Trapeztisch**  
Trapeze table



**Segelform**  
Sailform



**Kopftisch**  
Head table

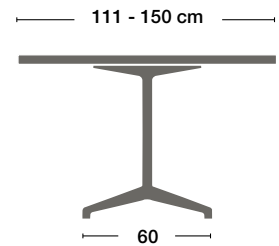
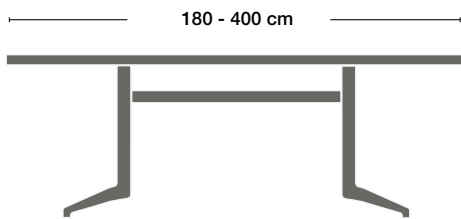


**Rundtisch**  
Round table

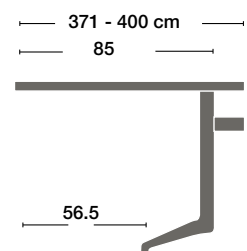
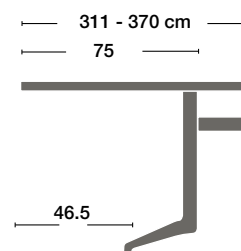
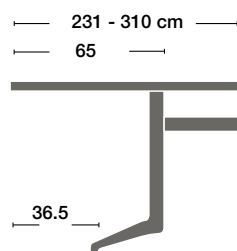
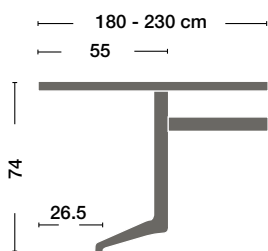


**Quadratisch**  
Square table

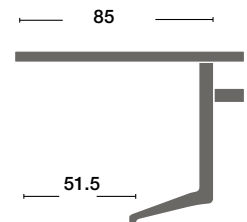
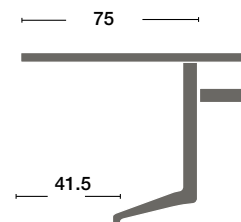
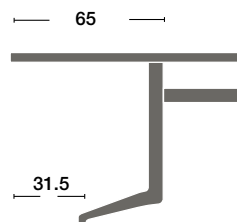
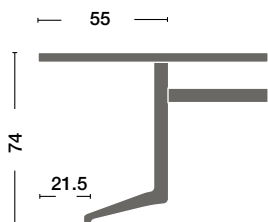
**DIMENSION | DIMENSIONS**



**Fuss 50 cm breit | Leg 50 cm wide**



**Fuss 60 cm breit | Leg 60 cm wide**





K 15\*



K 25



K 64\*



K 75



Cable Port  
Cable Port



Retractor  
Retractor

\* nur bei Plattenstärke  
28 mm möglich

\* only possible with  
panels 28 mm thick

KOMBINIERBAR MIT... | CAN BE COMBINED WITH...



LIN Stauraumkollection  
LIN storage system



TIX Stauraumkollection  
TIX storage system

SPEZIFIKATION | SPECIFICATIONS

Platte	Massivholz, brettverleimt, 28 mm oder 40 mm
Kante	K 15*, K 25, K 64* oder K 75
Oberfläche	lackiert, geölt oder geseift
Untergestell	2 Fusselemente mit verschraubtem Verbindungssteg in Stahl pulverbeschichtet, verchromt
Top	Solid wood, selection, 28 mm or 40 mm
Edge	K 15*, K 25, K 64* or K 75
Surface	Lacquered, oiled or soaped
Base	2 metal legs with a visible mounting connector, powder-coated, chrome-plated

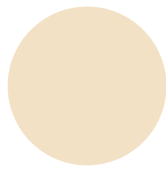
**Basisfarben** | Basic colours



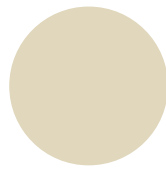
54  
schneeweiss  
snow white



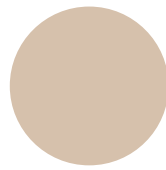
27  
grau-weiss  
grey white



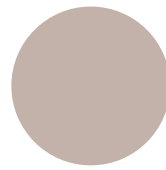
58  
vanille  
vanilla



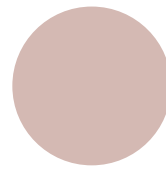
39  
elfenbein  
ivory



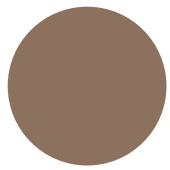
28  
rosenholz  
rosewood



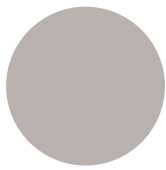
59  
kieselstein  
pebble



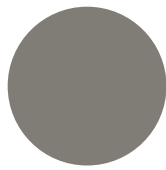
70  
altrosa  
dusky rose



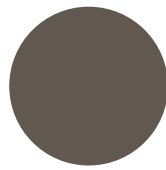
49  
kakao  
cacao



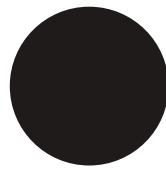
60  
steingrau  
stone grey



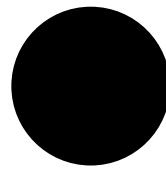
44  
zement  
cement



66  
granit  
granite



37  
schieferschwarz  
slate black



46  
schwarz  
black

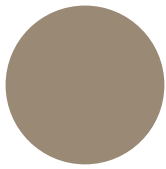
**Pulverfarben** | Powder colors



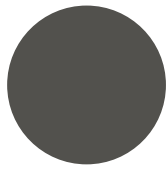
Trend 8  
4201A90160A10



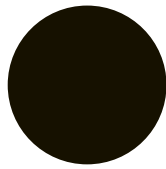
Style 23  
4201E76256A3F



Style 22  
4201E13212A3F



Style 28  
4201E76257A3F



Classic 38  
4201E82306A3F

**Metaloberflächen** | Metal surfaces



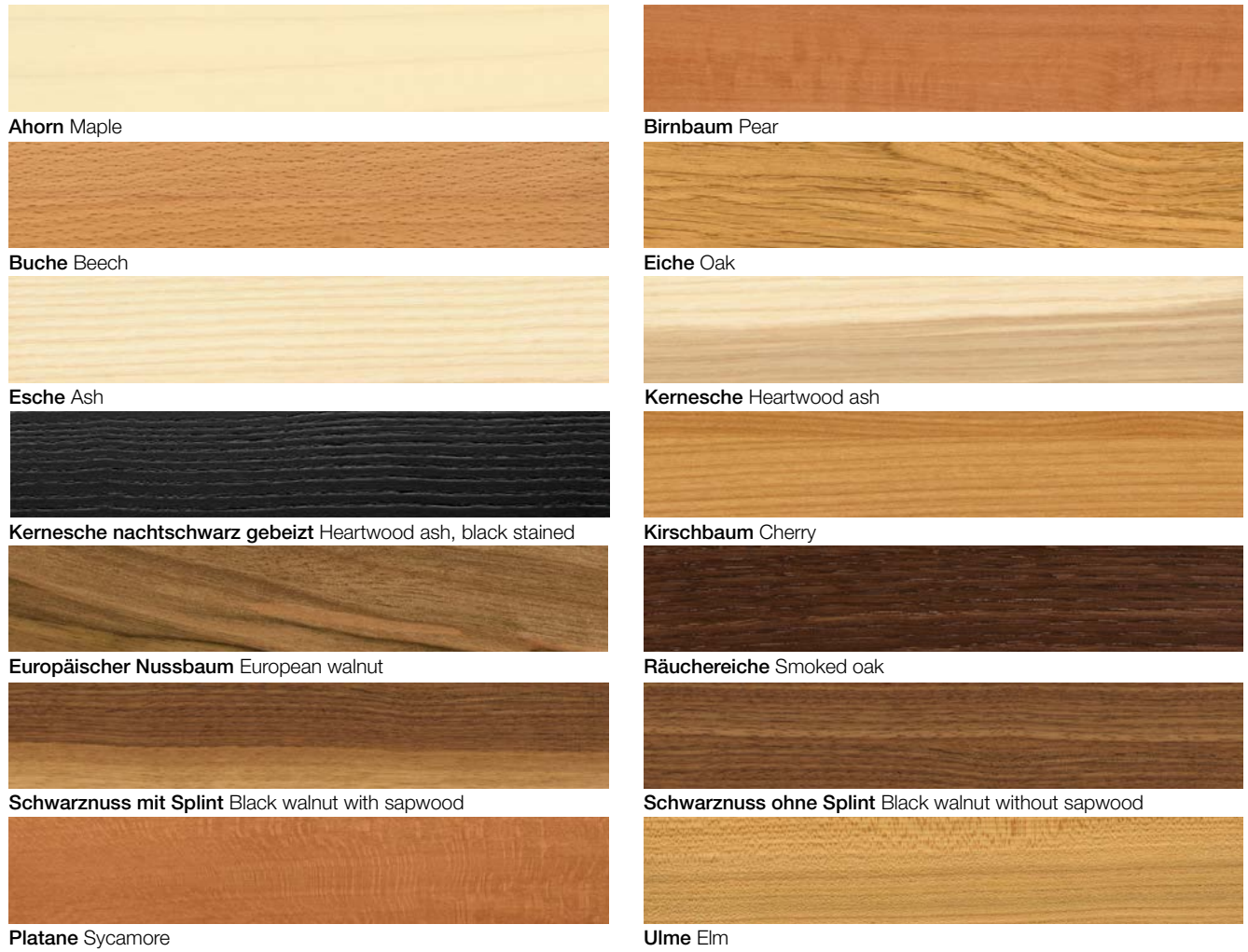
CG  
Chrom glänzend  
glossy chrome plated

**Alle abgebildeten  
Farben/Strukturen nicht bindend**  
All printed colours/structures  
cannot be regarded as binding

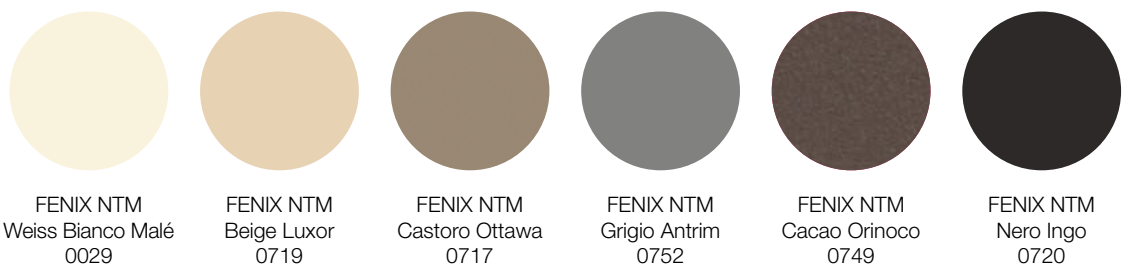
**Farbauswahl zeitlich vorbehalten**  
Colour selection: subject to change  
without notice

12/2019

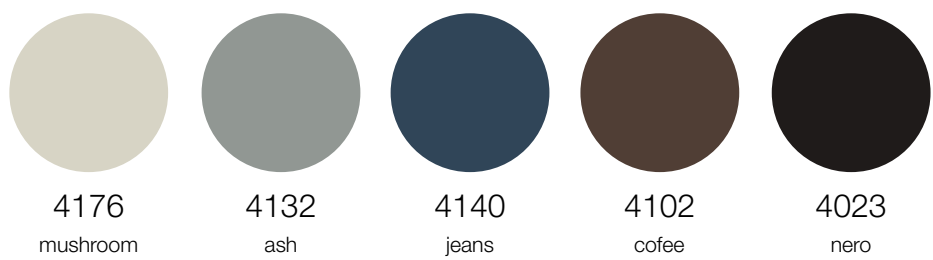
Massivholz | Solid wood



FENIX NTM



Linoleum | Linoleum



Mobimex AG  
Birren 17  
CH-5703 Seon

Telefon +41 62 769 70 00  
Fax +41 62 769 70 09  
Web [www.mobimex.ch](http://www.mobimex.ch)